

OUTPATIENT CENTERS

CONVENTUS

1001 Main Street
4th Floor
Buffalo, NY 14203

UNIVERSITY COMMONS

1404 Sweet Home Road
Suite 5
Amherst, NY 14228

SOUTHWESTERN OFFICE PARK

4535 Southwestern Blvd.
Suite 712
Hamburg, NY 14075

ROBERT WARNER REHABILITATION CENTER (DEVELOPMENTAL PEDIATRICS & REHABILITATION)

1001 Main Street
2nd Floor
Buffalo, NY 14203

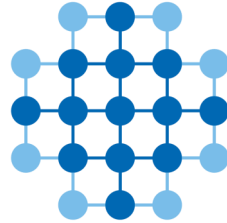
OISHEI CHILDREN'S OUTPATIENT CENTER (RHEUMATOLOGY)

1001 Main Street
3rd Floor
Buffalo, NY 14203

KATHERINE, ANNE & DONNA GIOIA PEDIATRIC HEMATOLOGY ONCOLOGY CENTER

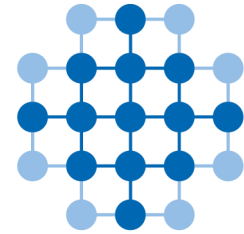
Roswell Park Comprehensive
Cancer Center
Elm & Carlton Streets
Ground Floor
Buffalo, NY 14203

A MEMBER OF



UB|MD

PHYSICIANS' GROUP



UB|MD

PEDIATRICS

PEDIATRIC PRIMARY CARE
PHYSICIANS AND
SUBSPECIALISTS

ACADEMIC TEACHING
FACULTY AT THE
UNIVERSITY AT BUFFALO



JOHN R. OISHEI
Children's Hospital



Jacobs School of Medicine
and Biomedical Sciences
University at Buffalo

ABOUT US

UBMD Pediatrics is one of 18 practice plans within UBMD Physicians' Group, the largest medical group in Western New York, and the medical practice for the Jacobs School of Medicine and Biomedical Sciences at the University at Buffalo.

Our physicians and mid-level providers staff the John R. Oishei Children's Hospital (OCH) in areas including the NICU, PICU, Emergency Department, hospitalist service as well as the OCH primary care pediatric centers.

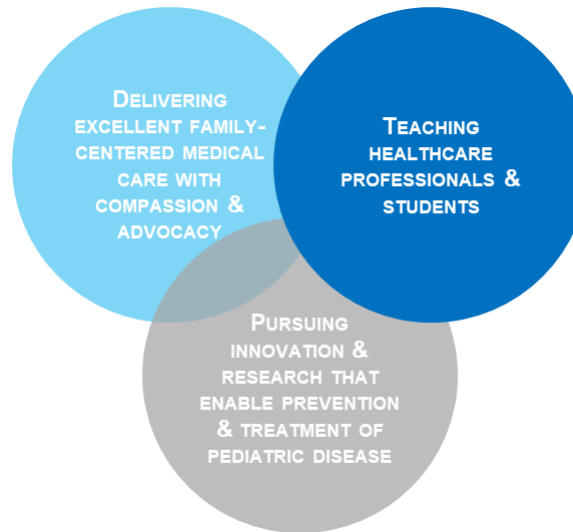
UBMD Pediatrics is the largest provider of pediatric subspecialists in Western New York.



MISSION & VISION

OUR MISSION:

To be the premier care provider for infants, children, adolescents, and young adults in Western New York and beyond by:



OUR VISION:

Though our outstanding work in delivery of care, teaching, innovation, and research, we shall be recognized as catalysts of well-being infants, children, adolescents, and young adults advancing their care to new levels of excellence.

FOR MORE INFORMATION,
PLEASE CALL 716.932.6073 OR
VISIT US AT
UBMDPEDIATRICS.COM.

CONTACT INFORMATION

Appointments with our pediatric subspecialists can be made by you with a referral from your primary care provider.

ADOLESCENT MEDICINE
716.323.0050

ALLERGY / IMMUNOLOGY
716.323.0130

CARDIOLOGY
716.323.0030

DEVELOPMENTAL PEDIATRICS & REHABILITATION
716.323.6410

DIABETES
716.323.0160

ENDOCRINOLOGY
716.323.0170

GASTROENTEROLOGY (DIGESTIVE DISEASES & NUTRITION CENTER)
716.323.0080

GENETICS (PEDIATRIC & ADULT)
716.323.0040

HEMATOLOGY / ONCOLOGY
716.845.4447

INFECTIOUS DISEASES
716.323.0150

NEPHROLOGY
716.323.0140

PULMONOLOGY
716.323.0110

RHEUMATOLOGY
716.323.6240